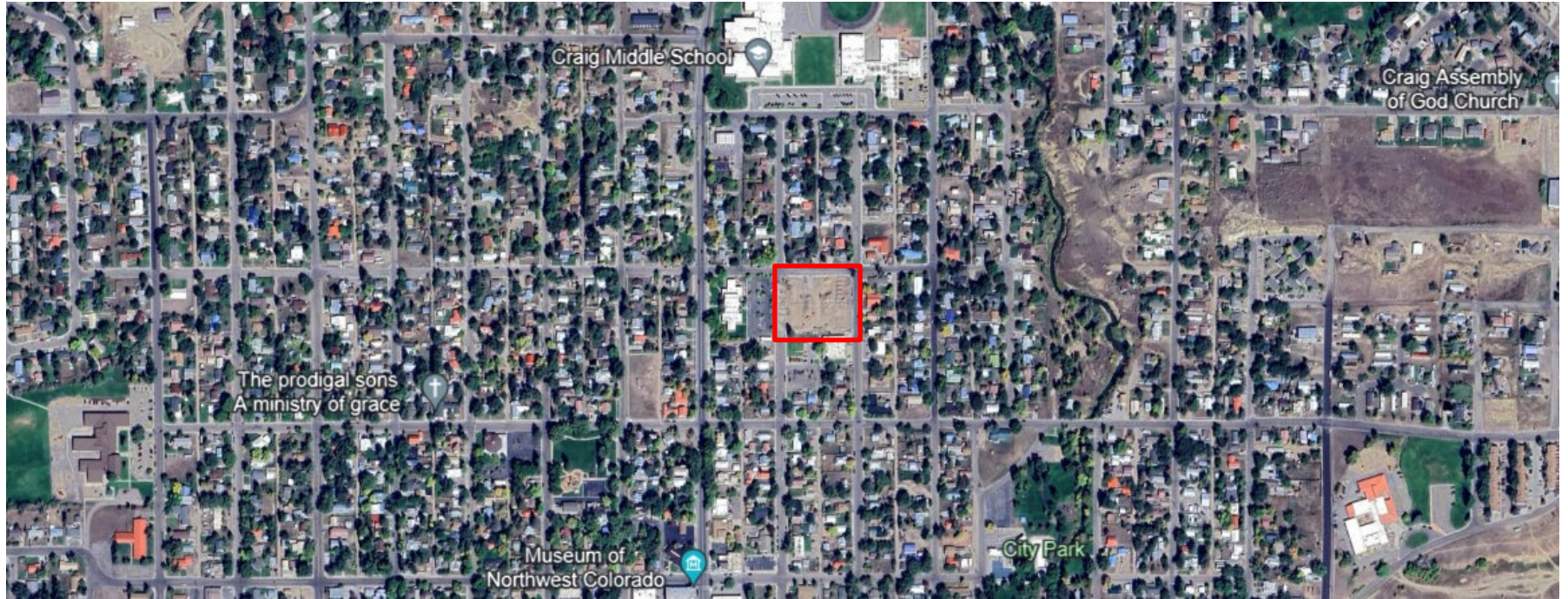




INTRODUCTION

Moffat County Former Hospital

785 Russell Street



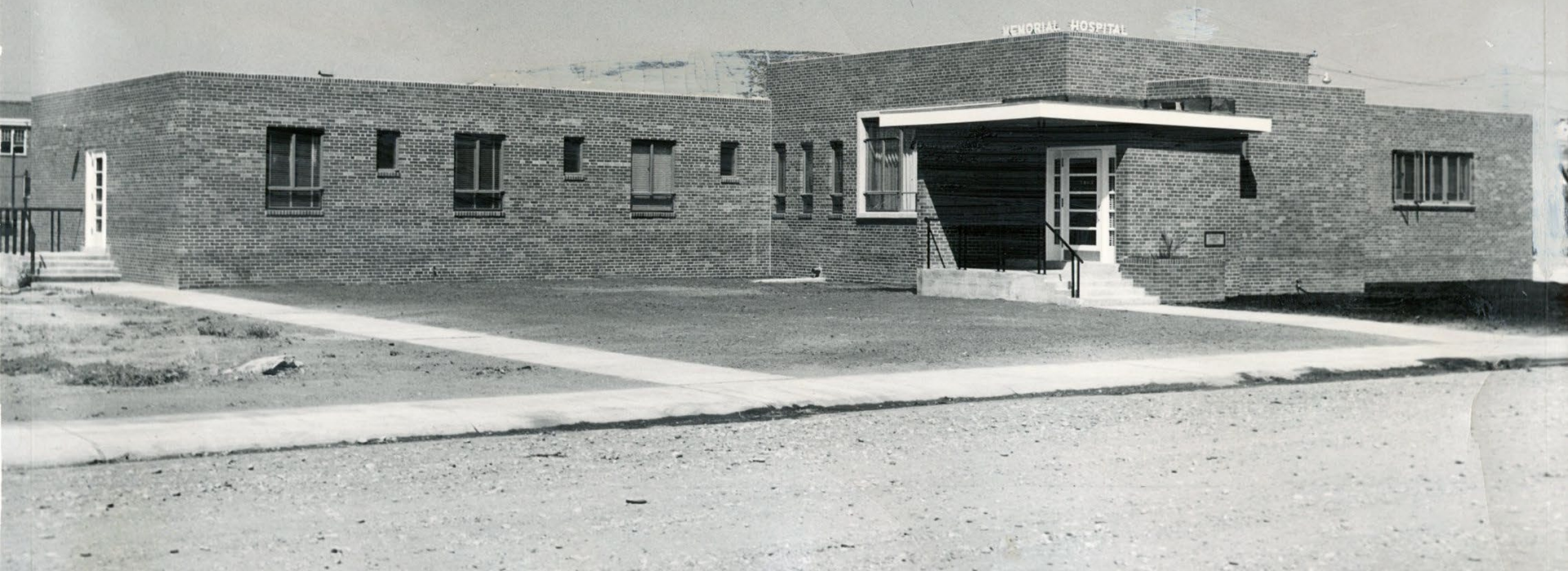
OUR HISTORY

Served as the Former Memorial Regional Health Hospital (MRH)

Built in 1949 with Multiple Additions

Primary Health Care facility until 2015 serving 13,000+

48,204 – Square Feet





Groundbreaking August 25, 2023



8th Street Redevelopment Project Craig Housing Authority "a place to call home"

The Craig Housing Authority (CHA) Project is a 20-unit housing development at the old Memorial Hospital site on 8th Street between Tucker and Russell Streets. We intend to provide affordable housing to local families and employees of Memorial Regional Hospital. The units would be for-sale and owners will have the opportunity to build equity in a quality home that is energy efficient. We are using state and federal grants to help fund the project so it requires certain affordability requirements that include income limits and appreciation caps.

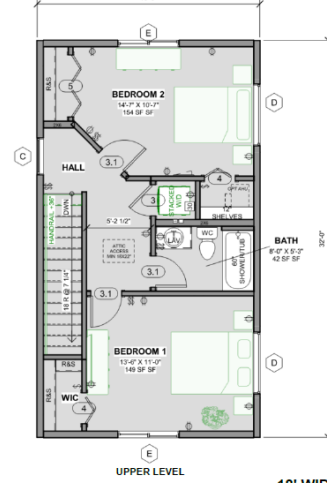
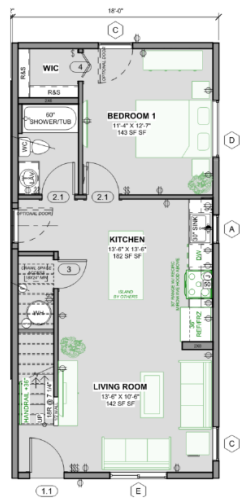
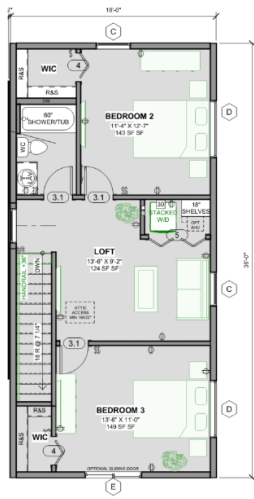
Are there limitations?

The housing would be limited to households earning up to 120 percent of the "Area Median Income for Moffat County."

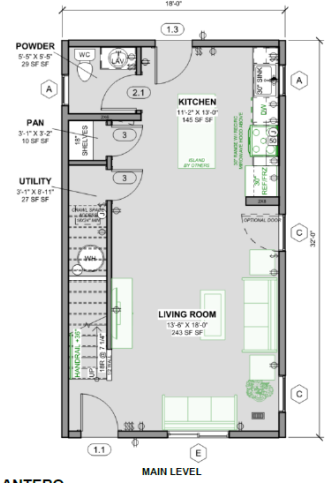
How can I afford to purchase an affordable Townhome?

The Housing Authority is exploring a buyer's access to limited mortgage assistance for income eligible households. This may include

18' WIDE SHAVANO
(EXTERIOR UNIT)



18' WIDE ANTERO
(INTERIOR UNIT)



RUSSELL STREET

CLEARANCE

(2) SHAVANO
(3) ANTERO
(5) TOWNHOME UNITS

(2) SHAVANO
(3) ANTERO
(5) TOWNHOME UNITS

(5) GARAGES

(5) GARAGES

(7) SURFACE PARKING

(7) SURFACE PARKING

24' ALLEY

(7) SURFACE PARKING

(7) SURFACE PARKING

(5) GARAGES

(5) GARAGES

(2) SHAVANO
(3) ANTERO
(5) TOWNHOME UNITS

(2) SHAVANO
(3) ANTERO
(5) TOWNHOME UNITS

250'

CLEARANCE

TUCKER STREET



Site Work and Foundations





FADING WEST

4/4

PROSET







PROSET
CONSTRUCTION
www.prosetconstruction.com